

TACTICALTECH1





Since Life Safety is all we do, our products are made to exacting quality and strength standards. Our quality process starts with our purchasing the best component for the task. We then check the quality from the time it is received in our production facility all the way through our processes to when it is packaged and shipped to our valued customers. All steps in our production process are monitored and evaluated in accordance to our ISO9001-2008 certified quality control/quality assurance (QC/QA) program. Our quality program is audited each year by SGS to ensure that we continue meet the stringent international QC/QA standards set forth by the International Standards Organization (ISO).

With over 25 years in the the safety / rescue business, RescueTECH knows a thing or two about how to make a quality product. RescueTECH provides manufacturing, distribution, and training services to fire, industry, tactical rescue teams worldwide.

The TacticalTECH division of RescueTECH was created to empower our design and production teams to develop and manufacture "Rescue-Grade" products for tactical extraction. We will continue to emphasize our unique, high quality customer relationship stamp onto the tactical market.

www.TacticalTECH1.com
251 Beulah Church Road
Carrollton, Georgia 30117
800.334.3368
770.832.9694
Fax 770.832.1676



UNCONDITIONAL GUARANTEE

All merchandise offered in this catalog is returnable (in new condition with complete original packaging) within 10 days, for any reason, for full refund credit less original shipping costs and any applicable restocking fees. CALL FOR RETURN AUTHORIZATION. Excludes cut lengths of rope or webbings and custom or special order products.

LIMITED WARRANTY

TacticalTECH warrants to the original purchaser that products manufactured and/or sold by TacticalTECH will be free from defects in materials and workmanship. This expressed warranty and all implied warranties imposed by law are limited to one year duration from the date of purchase. TacticalTECH will repair or replace any product returned under warranty if, in TacticalTECH's judgment, the product has not been misused or altered. No further warranties exist or are implied by TacticalTECH due to the high risks involved in rescue or tactical services and in outdoor activities such as, but not limited to, mountaineering, rock climbing, rappelling, or caving, which can be reduced only through the skill, training, and judgment of the individual participant. TacticalTECH shall not be liable for any and all consequential damages arising out of the breach of the expressed or implied warranties on sales by TacticalTECH products. This limited warranty in no way limits or alters other manufacturers' warranties on products that are sold or distributed by TacticalTECH. NOTE: Some states do not allow limitation on how long an implied warranty lasts nor the exclusion or limitation of incidental or consequential damages, so the above limitations may not apply.

WARRANTY EXCLUSIONS

TacticalTECH does not warrant products against normal wear and tear, unauthorized modification or alteration, improper use, improper maintenance, accident, misuse, negligence, damage, or if the product is used for a purpose for which it was not designed. This warranty gives you specific legal rights and you may also have other rights which vary from state to state. Except as expressly stated in this warranty, TacticalTECH shall not be liable for direct, indirect, incidental, or other types of damages arising out of, or resulting from the use of the product.

MODIFICATIONS

TacticalTECH reserves the right to modify, without notice, the terms, specifications, and price of products described in this catalog.

ORDERING INSTRUCTIONS

1. Use catalog numbers and descriptions. This will help us correctly and promptly fill orders.
2. Remember to indicate size, color, and length, where applicable.
3. We ship UPS but will mail parcel post or utilize motor freight at the request of our customers.
4. Order line: 800-334-3368, for information call (770) 832-9694. FAX (770) 832-1676.
5. Our office hours are 9:00 a.m. - 5:00 p.m. (eastern). FAX operates 24 hour per day.

NOTICE: By placing an order, the customer agrees with the terms and conditions stated below. And acknowledges having read and understood the important warnings in this catalog. The customer further agrees that the laws of the state of Georgia shall apply to the purchase or any dispute arising therefrom.

SHIPPING INFORMATION

All products are sold F.O.B. shipping point. Shipping charges for retail customers inside the U.S. will be approximately 9% of merchandise cost: \$10.00 minimum. For firm order shipping costs, contact our Customer Service Department for a quotation. A handling charge will be added to all shipments to cover insurance and carrier accessorial charges. Single items weighing over 70 lbs. will be shipped via most cost effective method.

PAYMENT POLICY

Purchase orders are accepted from government agencies, cities, and municipalities. Business and volunteer organization purchase orders are accepted if an open account has been approved by our credit department. All orders from individuals require Visa, Mastercard, or check with order. Please allow time for your check to clear your bank. International orders may require prepayment via wire transfer. Prices are in U.S. dollars and are subject to change without notice. Sales tax is added to all orders shipped to Georgia addresses. Billing discrepancies must be reported within 10 days of invoice date. Returned checks are subject to a \$30.00 fee.

DAMAGED SHIPMENTS

If the shipping container is damaged, immediately open the carton and inspect the contents. Damaged shipments should be reported to the carrier immediately and not returned until instructions are received. DO NOT return the goods to us unless you have received a return authorization.

RETURNS

Please call customer service at 770-832-9694 for a Return Authorization Number before returning any merchandise. Returns due to mis-shipments must be reported within 10 days. Freight on returns must be paid by the purchaser. Absolutely no returns on "less than spool" or open stock quantities of rope or webbing products or custom/ special order / non-stock items unless the item was received in a damaged condition. All products must be current model and color and must be in original packaging including labeling and product information inserts. Any return that is due to a customer error is subject to a re-stocking fee. Any eligible return will be credited only after a full inspection of the product is completed.

DISCLAIMER/WARNING

Tactical Rescue, Technical Rescue and safety is potentially hazardous. Any person using equipment sold by TacticalTech1 in any manner is personally responsible for learning the proper techniques involved, and assumes all risks and accepts full and complete responsibility for any and all damages or injury of any kind, including death, which may result from the usage of any TacticalTECH, RescueTECH1, or Rescue Technology equipment.



Denotes products manufactured in the U.S.A.

ROPE	2-3
TACTICAL WEBBING	4
SLINGS & LANYARDS	5-6
BAGS AND PACKS	7
DESIGN YOUR OWN KIT	8-9
HARDWARE	10-13
BELTS & HARNESSSES	14-15
PERSONAL PROTECTION	16
ALPHABETICAL INDEX	17

INDEX



RESCUETECH ACCESS™ LIFELINE

A static rope design that gives the best combination of all desired static rope characteristics. By building the ropes from ground up, we are able to provide a super-strong rope with low stretch and excellent flexibility and knotability. Our ropes actually handle better after 6 months of use than some new ropes from other manufacturers. We specifically address the issue of sheath slippage when constructing all of our top quality tactical rescue ropes. Standard rope lengths available in 150', 200', 300', and 600'.



Diameter (in)	Color	Strength (lbf)	WLL (lbs)	NFPA Rating	Weight (per 100 ft)	Rope Length
3/8	Black, Olive	6,070	405	Light	4.7	300'/600'
7/16	Black, Olive	7,870	525	Light	5.4	150'/200'/300'/600'
1/2	Black, Olive	10,000	667	General	7.0	150'/200'/300'/600'



7.5 MM EGRESS+ PER™

The EGRESS+ Personal Escape Rope w/ Snap is a high strength, lightweight escape line chosen specifically to go in our DarkSide7 Egress Ingress Tactical Rope Rappel Kit. The rope is manufactured of fire resistant 100% Technora™ with a strength of 5,200 lbf. We attach the rope to an ISC 2-stage autoocking Snap Hook (Black) using a proprietary sewing process.

Length: 25', 50', 75', 100'

Strength: 5,200 lbf



8MM EGRESS TAC HYBRID PER™

The EGRESS TAC Hybrid Cord was designed specifically for TacticalTECH. The sheath is a combination of the fire resistant qualities of Technora™ and the superior handling qualities of Polyester. EGRESS TAC HYBRID™ provides the needed strength and durability for intense escape and rescue situations. An added benefit of the Hybrid design is the low visibility color combination. The rope is sewn to an ISC 2-stage autolocking Snap Hook (Black).

Length: 25', 50', 75', 100'

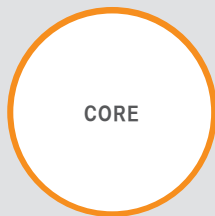
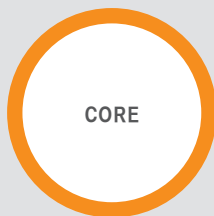
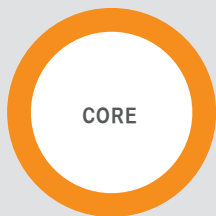
Strength: 4,000 lbf



16 Strands

32 Strands

48 Strands



CORE

CORE

CORE

SHEATH

NUMBER OF SHEATH STRANDS

The number of sheath strands affect the performance of a kernmantle rope. Fewer strands equate to a thicker sheath and can give a greater resistance to abrasion; but make the rope feel rough and may cause sheath slippage. More strands give the rope a smoother "feel". But, more strands mean a thinner sheath and may make the rope stiff; affecting the knot-tying performance. RescueTECH's kernmantle ropes take all factors of sheath design into consideration to give each type of rope, static or dynamic, the best of all handling characteristics.



APEX

Our Apex Dynamic single ropes are designed to provide optimum life safety while permitting the climber to push past his or her personal limits. Apex offers excellent durability with extreme fall protection. Designed to be pushed everyday, Apex ropes provide the long life and safety assurance you have come to expect from quality Dynamic Ropes. All of our ropes have dry treated cores. Select styles have a Double Dry (2x) treatment where the cover is coated with Endura Dry Treatment as well as the core for the ultimate in dry protection.

Diameter: 10.2mm

Styles: Dry Core, 2X Dry

Lengths: 50M, 60M, 70M, 200M

Colors: Olive w/ Black Stripes, Black w/ Olive Stripes

UIAA Falls: 9

Impact Force: 9.8

Static Elong: 4.5

Weight gm/meter: 66



PINNACLE

A lightweight dynamic single rope designed to meet the needs of the sport and trad climber looking for a rope that will allow longer pitches without all the extra weight of larger ropes. Light enough for redpointing, but durable enough for a season's worth of projects.

Diameter: 9.5 mm

Styles: Dry Core, 2X Dry

Lengths: 50M, 60M, 70M, 200M

Colors: Olive w/ Black Stripes, Black w/ Olive Stripes

UIAA Falls: 7

Impact Force: 10.3

Static Elong: 5.0

Weight gm/meter: 61



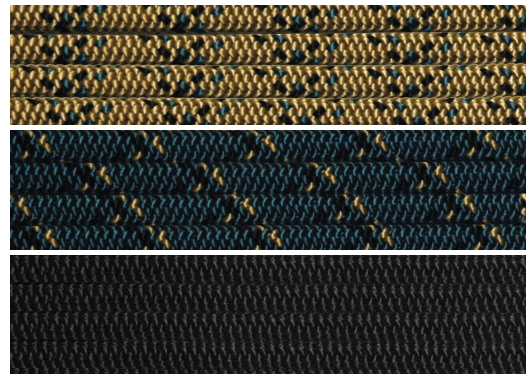
5MM TECH CORD

The cord's small diameter and 5,000 pound strength are a result of using a unidirectional core of 100% Technora fibers and a tightly woven polyester sheath. Tech Cord is extremely strong and lightweight.

Colors: Green Mix, Blue Mix, Solid Black

Lengths: 50 ft, 660 ft

Strength: 5,000 lbf

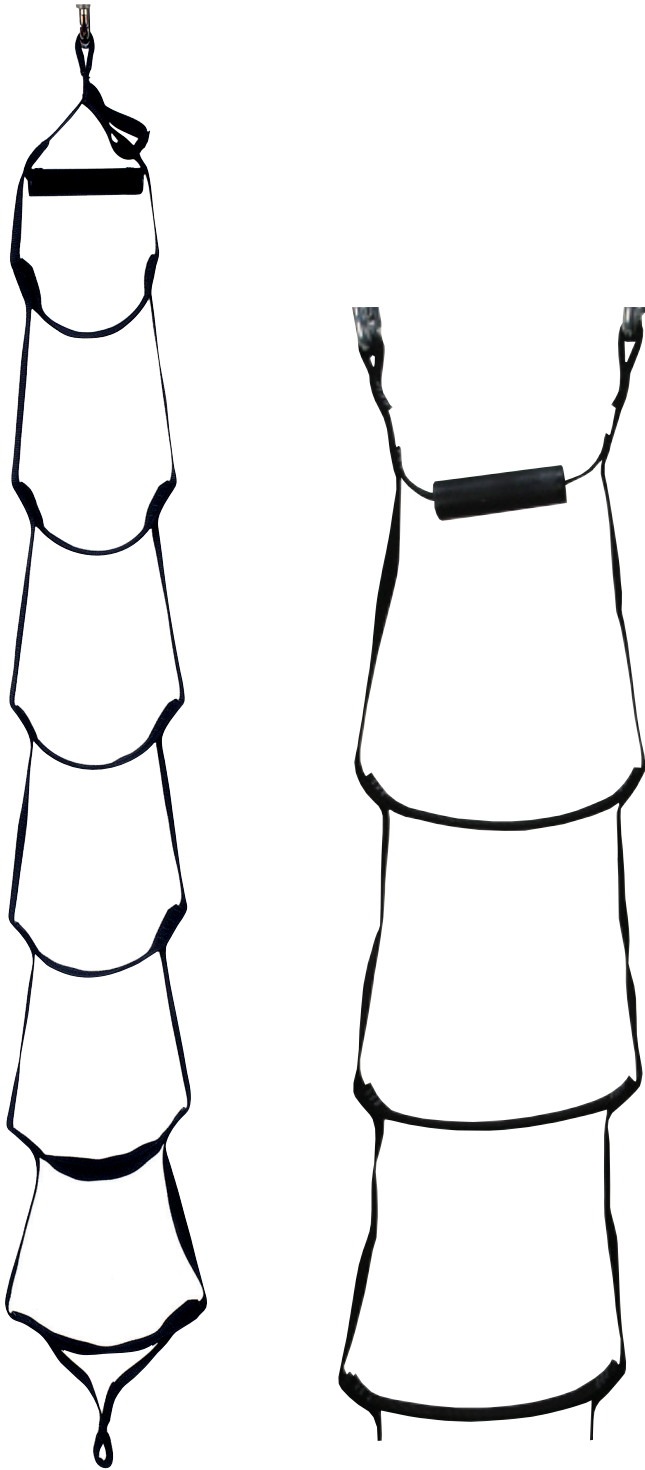


RESCUETECH PRUSIK CORDS

Prusik cords with the same high quality and long wear design as our Rescue Ropes. Size selection should be based upon diameter of main line. Flexible cord that is both strong and highly resistant to abrasion. Available by the foot or in Spool Lengths: 6mm x 300 ft; 7mm / 8mm x 200 ft

Diameter	Strength	Colors	Main Line
6 mm	1650 lbf	Black, Blue mix, Red mix	7/16 - 1/2"
7 mm	2300 lbf	Black, Teal mix, Gold mix	1/2 - 5/8"
8 mm	2900 lbf	Black, Red mix, Yellow mix	1/2 - 5/8"





TACTICAL WEBBING LADDER

The Webbing Ladder offers the simplicity of traditional 1" etrier with increased step comfort. A built-in spreader bar and stays in the 7" wide steps keep the ladder open and reduce foot pinching. Standard version is 6 ft. long and has a single rigging point. Deluxe version is 15 ft. long and has tandem rigging points that will allow multiple ladders to be linked together.

Lengths available: 6 ft, 15 ft
Individual Steps WLL: 300 lbs
Max Ladder WLL: 600 lbs



1" TACTICAL MIL-SPEC TUBULAR WEBBING



TacticalTECH Mil-Spec Webbing is high grade, high strength webbing made and designed for tactical use. This tubular webbing has been tested to withstand over 4000 lbs of force and is made out of the tough and durable nylon 6-6 fiber. **Sold by the foot, 50 ft, or 300 ft spools.**

Color(s): Black, Olive Drab, Tan

Width: 1" +/- 1/16"

Thickness: .070"

Spool: 50', 300'

Min Breaking Strength: 4,000 lbs



1" TACTICAL HEAVY DUTY FLAT WEBBING

The webbing of choice for rigging and anchor slings. Its superior strength and resistance to cutting and abrasion exceeds that of comparable sized 1 in. tubular webbing. Additionally, its knot efficiency can produce a strength up to 60% greater than knots in tubular webbing.

Spool: 50', 150'

Strength: 6,000 lbf



PERSONAL RETENTION LANYARDS

Great for positioning and extraction use. We combine our life safety webbing and hardware with durable elastic to create the perfect combination of retraction and strength. Our proprietary assembly method insures long-lasting performance. Five versions offer the best combinations to fit the user's requirements. Lanyards are designed to have equal usage lengths.



Snap/Frog



Snap/Quick Release



Snap/Loop



Quick Release/Loop



Snap/Snap

Colors: Black, Olive Green
Retracted Length: 28"
Extended Length: 36"
Strength: 3,600 lbf
 Snap Strength: 6,700 lbf



DARKSIDE7 RESCUE EXTRACTION DEVICE

The DarkSide7 Rescue Extraction Device is a multi-purpose, lightweight and strong device that gives the tactical rescuer the ability to effect a hands-free rescue of a fallen comrade. When clipped to the operator's belt, this device's cinch can be secured onto the leg of the victim allowing the rescuer can drag them to safety. The cinch is made of high quality leather and moves to secure the sling around the victim. The sling is made out of 5,000 lbf. 8mm TAC EGRESS and is sewn to an ISC 2-Stage Autolocking Snap. Includes pouch.

Weight: 8.8 oz
Length: 42"
Strength End to end: 3,400 lbf
 Basket: 10,500 lbf



TACTICAL RESCUE LOOP

TacticalTECH high strength 1" tubular webbing (4,500 lbf.) sewn with Nylon thread provides a high strength loop. Because of the high strength and abrasion resistance of the Rescue-Spec webbing, TacticalTECH Rescue Loops will outlast conventional tubular webbing slings.

Colors: Black
Sizes: 12", 24", 36", 48", 60"
Strength: End to end: 7,400 lbf
 Basket: 11,000 lbf
WLL: 740 lbs



RIGGING / RESCUE SLING

A great combination rigging sling and access tool. When used as a rigging sling, the unit may be wrapped around a rigging point providing a quiet sling to attach rappelling ropes, etc. Loops in each end are large enough for gloved hands and make an excellent access sling to aid in pulling team members up to the top of walls, etc.

Length: 5.5 ft, 8 ft
Strength: End to end: 6,500 lbf





C.H.A.S.E

Casualty-Hasty-Available-Stretcher-Equipment

The CHASE Stretcher is a tool for instant rescue. The secret is a proprietary combination of super lightweight, ripstop nylon material with a patented self-packing design. The result is a strong, reliable emergency stretcher that stows away to a light-weight, compact pouch. The pouch is actually built in to the stretcher, so it can't be misplaced. UNITS come either standard or fire-resistant. Complete with quick-attach / release leg/torso straps. Multi-Purpose, Multi-Use, Lightweight, Compact.

Color(s): Black, Orange, or Hunter Green

Sizes: Standard / 18 x 84" / **Weight:** 1.3 pounds

Chase II / 26 X 84" / **Weight:** 1.7 pounds

Handle Strength: 1,200 lbf





DOUBLE END BAG

Made from heavy-duty Cordura® Nylon fabric w/ grab and throw loops. Gusset collars on the ends increase capacity and ease closure. Drawstring openings at both ends allow user to “rotate” the rope using both ends equally. Pouch holds important rope use documents.

Color: Black

Small: Holds 150' of 7/16" rope

Medium: Holds 300' of 7/16" rope

Large: Holds 400' of 7/16" rope



D7 RAPPEL DUFFLE

Suitable for holding 300' of 7/16" rope, two basic harnesses, and rappel hardware, the Rappel Duffel is constructed of 1000 Denier Cordura Fabric and has a reinforced slot to allow for the rope passage either on rappel or pre-dropped. Shoulder strap is padded and removable for increased functionality.

Color(s): Black, Coyote, and Multicam

Dimensions: 20"x12"



LEG ROPE BAG

Specially designed to hold rappelling rope for special operations uses. Hook and Loop closure on strap secures bag to leg. We use a special webbing on straps that feature rubber gripping stripes to help prevent the bag from sliding down your leg. Outside pouch holds extra needed equipment. Rope not included.

Small: Holds 75' of 7/16" rope

Large: Holds 150' of 7/16" rope



ROPE BAG

Constructed of heavy duty water resistant Cordura nylon sides and nearly-indestructible Ballistic Nylon bottom. Side seams of bags are double stitched so that no fabric edges are exposed for fraying. Bottom seam is double stitched and webbing reinforced for superior strength and resistance to abrasion. Drawstring closure with cord lock. Accommodates rope and or equipment. Has unique inside log book pouch. Handles connected to interior, and grommet on bottom allows drainage.

Color(s): Black, MultiCam



Size	7/16" Cap	1/2' Cap	Shoulder Strap	Handles
Small	175	125	n/a	2
Medium	300	225	1	2
Large	400	325	2	2
XLarge	600	500	2	2



D7 TAC EQUIPMENT PACK

Designed to provide organized storage and convenient transportation of TAC rescue equipment. The main compartment is fully padded with closed cell foam and has webbing loops to attach equipment. The equipment is covered with zippered panels to muffle the 'battle rattle'. The pack is optimized with a webbing carry handle and padded, stowable shoulder straps. Both shoulder straps and the front of the pack are covered with MOLLE adaptable webbing.

Color(s): Black, Coyote, and Multicam



D7 EGRESS / INGRESS TACTICAL ROPE KIT

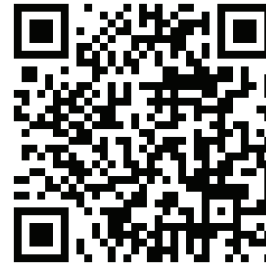
A multi use kit that can be configured for personal escape and tactical rescue. Personal escape systems can be configured from the 25' kit, meant for rappel escape out of 1-2 story buildings, to the 100' kit for taller building, towers, and mountainous environments. By anchoring the rappel device, the kit can be used for lowering casualties. Each bag is purpose-built for the length of rope it holds. The bags offer several attachment styles and colors. The 25' and 50' bag offers 3 back styles: molle, quick-release, or belt wrap Velcro. The 75' bag is similar to the 50' except that it is taller and is offered in only a quick release belt wrap style and also functions as a drop leg rope bag. The 100' bag comes with a hideaway bandoleer style shoulder strap and two handles for extra mobility. Choose from our EGRESS+ PER™ rope manufactured from 100% Technora™ fire resistant fibers (strength: 5,000 lbf.) or our EGRESS TAC Hybrid™ (Technora™ / Polyester sheath) for low visibility applications. An integral autolocking snap hook is attached to the end of the rope using a proprietary knotless attachment.

Add the DMM Revolver carabiner for extra help when lowering or using the system for mechanical advantage hauling. The Revolver carabiner has a built-in pulley making it the ideal multi-use carabiner for these compact kits. **A full list of gear options is available on our website.**

Color(s): Black, Coyote, or Multi-Cam.



The D7 Kits were designed with two purposes: Personal Rappel and Tactical Rescue. When functioning as a personal rappel kit the equipment to be selected is simple: Rope (length), Carabiner and Descent Device, and Bag. If someone is purchasing a D7 kit for Tactical Rescue, they may use it for personal rappel, horizontal drags, vertical lifts and lowers, stabilization, or even booby traps. And the potential accessories that could be used are only limited to the space/weight available to the Special Operator and their imagination/training. **Scan our QR Code with your smartphone to find out more about our fully customizable Egress Ingress Tactical Rope Kits. The tactical kit that lets you decide how you want your gear to work for you.**



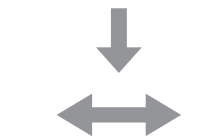
START BY SELECTING WHICH ROPE LENGTH & BAG SIZE WILL BEST SUIT YOUR NEEDS:



SELECT YOUR ROPE



7.5 MM EGRESS+ PER™ or 8 MM EGRESS TAC HYBRID PER
(SELECT ONE)



SELECT A CARABINER & DESCENDER



Pirate Carabiner / Twistlock / Screwgate
Gecko Aluminum / Screwgate / Twistlock
Gator Aluminum / Screwgate
(SELECT ONE)



Rock Exotica Micro8 or Mini8 Descender, or Escape 8
Personal Descender
(SELECT ONE)



ADD AN ACCESSORY OF YOUR CHOICE.



Darkside7 Rescue Extraction Device



DMM Revolver / Twistlock



Mini Traxion



SINGLE MICRO TACTICAL PULLEY

A Small Lightweight Solution. A strong pulley in a small package. Made from alloy aluminum, this pulley is perfect for a variety of rescue uses. From Tower Rescue to Water Rescue the RT Micro is one of the most versatile pulleys around.

- Min Rope Diameter:** 5/16"
- Max Rope Diameter:** 7/16"
- Dimensions:** 2.9" x 1.75"
- Strength:** 7868 lbf
- WLL:** 780 lbs
- Weight:** 2.9 oz



MINI TRAXION

Compact and lightweight self-jamming pulley. The compact MINI TRAXION has three distinct modes of operation (pulley/progress capture pulley/ascender), making it the ideal companion for extended vertical adventures. Use it for hauling light loads, ascending rope and self-rescue. Efficient and compact: aluminum sheave mounted on a self-lubricating bearing. Trigger cam with teeth and cleaning slot works even on dirty or icy ropes. Cam can be locked in open position so device can be used as a simple pulley. Can also be used to ascend a rope.

- Min Rope Diameter:** 5/16"
- Max Rope Diameter:** 1/2"



2" / 2.5" / 3" Single Pulley

RESCUETECH TACTICAL PULLEYS

RescueTECH has partnered with ISC to develop a complete line of Rescue Pulleys. Available in Single and Double versions, the sheaves roll on a highly lubricated bushing or roller bearings.



2" / 2.5" / 3" Double Pulley

	Dim's (in)	Tread Dia.	Strength (lbf)	WLL (lbs)	Weight (oz)	Max. Rope Dia.
2" Single	4 x 2.75	1.6"	8,993	899	8	1/2
2.5" Single	5.1 x 3.45	2.1"	11,240	1124	11.2	1/2
3" Single	6.25 x 4.15	2.5"	15,737	1574	16	5/8
2" Double	5 x 2.75 x 2	1.6"	8,993	899	13.6	1/2
2.5" Double	6.25 x 3.45 x 2	2.1"	11,240	1124	19.2	1/2
3" Double	7.5 x 4.15 x 2.25	2.5"	15,737	1574	28	5/8



2 STAGE AUTOLOCK

No-Snag Gate / Frame design prevents the carabiner from snagging webbing or small cords.

Gate Locking Twistlock

2-Stage autolock means that it takes 2 distinct motions to open the carabiner
1. TWIST 2. OPEN



SCREWGATE

No-Snag Gate / Frame design prevents the carabiner from snagging webbing or small cords.

Gate Lock Design

Prevents over-tightening while loaded.

GECKO ALUMINUM

(Pictured on left)

The ISC Gecko is a state of the art forged aluminum carabiner designed to meet the rigors of mountain climbing, rappel, and rescue. Gate Locking Twistlock (2-Stage Autolocking) or Screwgate design prevents over-tightening while loaded. **CE certified to EN362 and EN12275**

Weight: 3.0 oz

Locking Style: 2-Stage Autolock or Screwgate

Dimensions: 4.7 x 3.0"

Gate Opening: .88"

Strength: Major Axis: 6,745 lbf
 Minor Axis: 1,800 lbf
 Gate Open: 1,800 lbf



GATOR ALUMINUM

The ISC Gator is a state of the art forged aluminum carabiner designed to meet the rigors of mountain climbing, rappel, and rescue. Gate Locking design prevents over-tightening while loaded. 2-Stage autolock takes 2 distinct motions to open the carabiner 1. twist 2. open. No-Snag Gate / Frame design prevents the carabiner from snagging webbing or small cords. **CE certified to EN362 and EN12275**

Weight: 3.0 oz

Locking Style: 2-Stage Autolock or Screwgate

Dimensions: 4.1 x 2.5"

Gate Opening: .88"

Strength: Major Axis: 6,745 lbf
 Minor Axis: 1,800 lbf
 Gate Open: 1,800 lbf



OD50 RESCUE CARABINER

A Great Multi-Use Carabiner manufactured from heat-treated alloy steel construction with Black Chromate corrosion protection. Made to meet the toughest rescue needs. Gatelocking Screwgate or Autolock closure.

Rating: General Use.

Weight: 7.7 oz

Locking Style: 2-Stage Autolock or Screwgate

Dimensions: 4.48 x 2.45"

Gate Opening: .8"

Strength: Major Axis: 11,240 lbf
 Minor Axis: 2,695 lbf
 Gate Open: 4,270 lbf



DMM REVOLVER, TWISTLOCK

2 in 1 functionality. The DMM Revolver has been specifically chosen by TacticalTECH due to its versatility and lightweight construction. The integral pulley wheel at the top reduces the force needed when hauling or lowering. This means that the longevity of the rope will be increased while adding the benefit of a 2 in 1 device. The Revolver comes in a Grey/Red or Black.

Weight: 2.4 oz

Locking Style: 2-Stage Autolock

Rope Bearing Surface Width: .39"

Gate Opening: .63"

Strength: Major Axis: 5,395 lbf
 Minor Axis: 2,023 lbf
 Gate Open: 2,023 lbf



PIRATE CARABINER

The Pirate Carabiner is a superior belay carabiner. Its improved, patented Keylock design prevents rope and webbing snags. It has the highest inward gate strength (1350 lbf) combined with the biggest gate opening of comparable sized equipment.

Weight: 2.85 oz

Locking Style: 2-Stage Autolock or Screwgate

Gate opening: 1.0"

Certifications: CE, UIAA

Breaking Strength: Major axis: 5,845 lbf
 Minor Axis: 2,473 lbf
 Gate Open: 1,574 lbf





ROCK EXOTICA MINI8 & MICRO8 DESCENDER

The Rock Exotica MiniEight feature side ears that let you easily vary friction, accommodate a wide range of rope sizes and are super easy to tie off. The biner hole has a rubber gasket that fits tightly to your carabiner. We use 7075 aluminum, which is harder and will last longer than the cheaper alloy in other figure 8's. Wide friction range for ropes from 6-13mm.

Max Rope Dia. (Single Rope): 13 mm
Max Rope Dia. (Double Rope): 10.5 mm
Breaking Strength: 14 kN

A. Mini8 Descender

Weight: 2.1 oz
Height: 3.64"
Width: 3.21"

B. Micro8 Descender

Weight: 1.7 oz
Height: 2.96"
Width: 3.05"



ESCAPE 8 PERSONAL DESCENDER

A compact Escape descender with "ears" for quick personal escapes. The "ears" are situated to provide a compact Rescue 8 design for escape systems.

Rating: Escape Use.

Weight: 4 oz
Dimensions: 2 7/8" x 2 3/4"
Strength: 3,150 lbf
WLL: 300 lbs



RESCUETECH RESCUE 8 DESCENDER

Forged Aluminum Rescue 8 Descender. Our alliance with ISC has created several new items such as this forged aluminum rescue descender / belay device. Made from forged alloy aluminum and hard-coated for durability.

Rating : General Use

Weight: 7.2 oz
Dimensions: 6.75 x 6"
Strength: 7,868 lbf
WLL: 786 lbs



RESCUETECH STEEL RESCUE 8 DESCENDER

Three Dimensional Design Forged steel Rescue 8 descender with corrosion resistant plating. For ropes up to 3/4" diameter. Three dimensional design allows user to vary friction depending on which way the descender is used. Drop forged.

Rating: General Use.

Weight: 24 oz
Dimensions: 6.5 x 6"
Tensile Strength: 15,000 lbf
WLL: 1,500 lbs



TIBLOC

Compact emergency ascender. In a bind, this ultra-lightweight ascender can be used to build hauling systems or as a Prusik-replacement in self-rescue situations. Use with pulley for a lightweight emergency hauling kit. Chrome-plated steel cam with angled teeth and self-cleaning slot securely grips the rope, even in muddy or icy conditions. Can be used as a progress capture device in a hauling system. Small hole at top of TIBLOC allows a keeper cord to be attached. Caution: Tibloc should be used only with carabiners made of uniform oval or round stock in order to prevent damage to the rope.

Weight: 1.4 oz
Min Rope Diameter: 8 mm
Max Rope Diameter: 11 mm



CMI HANDLED ASCENDER

One of the strongest open-sided ascenders available. Machined from solid aircraft aluminum extrusion and 4140 chrome-moly steel cam with new non-metallic finish. Will accommodate ropes from 1/4" to 5/8" in diameter. Special safety gate design is superior to other open sided ascenders. Attach to carabiners, ascender slings, or combination. Set includes one right hand and one left hand unit of the same color.

Weight: 18 oz./pair
Dimensions: 7.5" x 3"
Strength: 5,000 lbf





ANTHRON DOUBLE STOP DESCENDER, DSD 30 + 25

A manually operated controlled descent device that utilizes a cam assembly that provides friction on the rope to hold a load, or allow the load to descend. To begin descent, the user depresses the control lever. If the control lever is fully depressed in a panic situation, the descent will stop. Normally connected directly to the users seat harness, the Anthron may be attached to a rigging point and used as a lowering device. Can be placed on the rope at any point. Proper rigging diagrams on the sideplate of the descender. **For 7/16" ropes.**

Weight: 13.6 oz

Dimensions: 7.5 x 3.3"

WLL: 300 lbs



ASCENDER FOOT SLING

Single. A handy sling that, when used with a handled ascender, allow the rescuer to climb up a rope. Easily attaches to ascender with rapid link (link not included). **Adjustable length.**

Double. For those times where a single foot loop will not work, the RescueTECH Double Foot Sling fits the need. A handy sling that, when used with a handled ascender, allows the rescuer to climb up a rope. Easily attaches to ascender with rapid link or girth hitch. Foot loops held open by special stiffener.





LIGHTWEIGHT TAC RAPPEL HARNESS

The new TAC Rappel Harness adds to TacticalTECH's popular Adjustable Rappel Harness by adding a **Quick-Adjust** waist buckle with comfort pad. Additionally, a double thickness waist allows us to put additional gear loops on the right side. Includes storage bag. **Rating: Light Use.**

Color: Black

Weight: 21 oz

Size: M/L 28 - 40" XL 36 - 54"



ADJUSTABLE SEAT HARNESS

Manufactured of sturdy 1.75" webbing and forged hardware. **Double Pass** waist buckle provides non-slipping adjustment. Quick-adjust leg loops allow the rescuer to don this harness with ease. Forged D ring provides a secure attachment point for carabiners. Equipment loops for attaching extra hardware. Used in all types of rappelling and rescue situations. 2 gear loops.

Rating: Light Use

Color: Black

Weight: 27 oz

Size: M/L 28 - 40" XL 36 - 54"



Size	Height	Waist
S	5'2"-6'	27-35"
M/L	5'2"-6'	31-39"
XL	5'9"-6'8"	35-51"

TAC RESCUE FULL-BODY

Designed for rescue in the harshest of tactical environments, the TAC Rescue Full-Body Harness incorporates the best features of a standard rescue full-body in a light-weight, low contrast TAC form. Constructed with a special built 1.75 inch webbing that features a durable stiffness while being easily adjusted to size and light weight hardware including Aluminum D-Rings and 2-piece buckles (Quick attach Cobra Buckles optional), the TAC Rescue Full-body performs in the most rigorous of rescue functions. Durable, reinforced padding for shoulder, waist, and leg areas provides additional comfort and are adjustable to fit individual preferences. NFPA Class 3.

Color(s): Black, Tan

Weight: 73.6 oz



TAC2 RAPPEL-PADDED

The TAC2 Rappel Harness is designed to provide the operator with all-day comfort via the lightweight and breathable mesh padding. Manufactured with double-thickness waist section that can be rigged as a platform for holsters, ammo, etc. Available in 2 pc Quick Adjust and Cobra Buckles.

Color(s): Black, Tan

Weight: 29.6 oz

Size: M/L 28 - 40" XL 36 - 54"





ADJUSTABLE RAPPEL HARNESS

The Adjustable Rappel Harness features a "Soft-Connect" rigging point to reduce metal-on-metal noise produced when a carabiner is attached to a "D" ring. Manufactured of sturdy 1.75" webbing and forged hardware. **Double Pass** waist buckle provides non-slipping adjustment. Quick-adjust leg loops allow the rescuer to don this harness with ease. Equipment loops for attaching extra hardware. Used in all types of rappelling and rescue situations. 2 gear loops. **Rating: Light Use**

Color: Black

Weight: 27 oz

Size: M/L 28 - 40" XL 36 - 54"



DELUXE L/W TAC RAPPEL HARNESS

An upgraded version of our popular TAC Rappel Harness that features stow-able leg loops. Legs feature 2-pc adjuster buckles that allow the straps to be donned after the waist section is secured. **Quick-Adjust** waist buckle.

Rating: Light Use.

Color: Black

Weight: 22 oz

Size: M/L 28" - 40" XL 36" - 54"



COBRA TAC RAPPEL

We modified our popular Deluxe TAC Rappel harness with a new leg pouch design that allows each leg to be deployed individually. This version also utilizes the COBRA buckle in the Waist and Leg to create a quick donning tactical rappel belt / harness.

Color(s): Black Web / Black Pouch
Tan Web / MultiCam Pouch

Weight: 21 oz

Size: M/L 28 - 40" XL 36 - 54"



RESCUE TECH SURVIVAL BELT 2

A multi-purpose belt for emergency rappels, belays, restraint straps, anchor slings, etc. With carabiner attached to the forged steel buckle, the belt allows the user to "get out quick". Velcro hook & loop neatly secures spare length. Manufactured with 1.75" heavy duty webbing (strength: 6,000 lbf) using the same high strength methods of RescueTECH's Life Safety Harnesses. **Rating: Escape**

Color(s): Black, Tan

Weight: 8 oz

Size: S 25 - 36" M 32 - 42" L 36 - 48" XL 40 - 55"



RESCUE TECH UNIFORM EMERGENCY BELT

A lighter weight version of our Survival Belt. Lightweight forged "V" ring is used for carabiner attachment point and is held securely by a Velcro loop. Double-pass buckle insures security without slipping. Extra webbing secured with elastic loop. Made in U.S.A. with the highest quality materials and sewing methods. **Rating: Escape**

Color: Black

Weight: 7.5 oz

Size: Standard 28 - 40" L 40 - 55"



QUICK ATTACH UNIFORM BELT

Cobra buckled version of our Uniform Belt. Constructed with 2 layers of Type 13 webbing and a Cobra quick connect buckle. Front "V" ring serves as an emergency rappel or anchor point for TAC rescue. Hook and loop fastener serves to secure tail. **Sold to Military, Law Enforcement, Fire Department, and Search and Rescue Agencies only.**

Color(s): Black, Tan

Weight: 9 oz

Size: Standard 28 - 40" L 40 - 55"





RINGERS TECHNICAL ROPE RESCUE GLOVE

Omni-directional stretch fabric offers flexibility and excellent airflow. Palm manufactured of leather. Double thickness in palm with DuPont Kevlar® thread for long wear. Reinforced fingertip and thumb extends glove life. Pre-curved ergonomic shape and anti-vibration gel padding for extra comfort.

Size: S, M, L, XL, XXL



RESCUETECH HEAVY DUTY RAPPEL / FAST ROPE GLOVE

Tough cowhide shell reinforced with cowhide on palm and fingers. Wear pads are sewn individually onto fingers and thumb to provide better protection than gloves with a "Flap" wear pad. Finger tips are single layer for better tactile response. Flexible design permits ease in rope handling. Stitched with high strength thread. Leather loop allows for attachment to carabiners. Color: Black (colorfast) Weight: 6.1 oz. Made in USA.

Size: S, M, L, XL, XXL



PRO LEATHER RESCUE GLOVES

The Pro leather gloves are perfect for those jobs that are especially hard on the hands. When anything less than a leather glove won't do. Top quality leather construction throughout. Leather knuckle panel provides increased protection. Easy entry, wide opening elastic cuff (Easy-Fit design). Anatomically-cut, leather palm and heel reinforced panels for extended durability. Smooth surface thumb improves handling of objects. Reinforced thumb and fingertips increase protection and reduce wear.

Size: S, M, L, XL, XXL



PETZL VERTEX VENT RESCUE HELMET

The Petzl Vertex Vent is the next step in adding comfort to the rescue helmet. The vents can be adjusted on the outside to give the rescuer extra ventilation on the fly. As with all Petzl helmets the Vertex Vent offers accessories that are made specifically to fit onto the helmet with ease. Six-point mesh liner conforms to the shape of the head for improved comfort. Shock absorption achieved through deformation of the outer shell. CenterFit adjustment system ensures centering and optimal stability of the helmet on the head. Ventilation holes with sliding shutters allow the ventilation to be adjusted as needed from the outside.

Size: 20.9-24.8"

Weight: 16 oz



STORM PRO RESCUE HELMET

The Storm's shell is a strong but light ABS plastic with a firm foam lining for comfort and shock absorption. The Storm also features an adjustable ratchet system ensuring perfect comfort and fit every time you put it on. Certified to CE En 1385 Helmet Standards.

Size: Small / Medium 20.9 - 23.3"

Large / XLarge 21.6 - 24.0"



USAR KNEE & ELBOW PADS

Great for use in building collapse searches. Velcro closure and tough cap. Provides heavy duty protection for the toughest jobs.

TACTICALTECH1

ALPHABETICAL INDEX

0D50 RESCUE CARABINER	11
1" TACTICAL HEAVY DUTY FLAT WEBBING	4
1" TACTICAL MIL-SPEC TUBULAR WEBBING	4
5MM TECH CORD	3
7.5 MM EGRESS+ PERSONAL ESCAPE ROPE (PER™)	2
8MM EGRESS TAC HYBRID PERSONAL ESCAPE ROPE (PER)	2
ADJUSTABLE RAPPEL HARNESS	2
ADJUSTABLE SEAT HARNESS	15
ANTHRON DOUBLE STOP DESCENDER, DSD 30+25	12
APEX ROPE	3
ASCENDER FOOT SLING	13
C.H.A.S.E (CASUALTY HASTY AVAILABLE STRETCHER EQUIPMENT)	6
CFI HANDLED ASCENDER	12
COBRA TAC RAPPEL HARNESS	15
DARKSIDE7 RESCUE EXTRACTION DEVICE	5
DARKSIDE7 TAC EQUIPMENT PACK	8
DARKSIDE7 EGRESS/INGRESS TACTICAL ROPE KIT	8-9
DELUXE L/W TAC RAPPEL HARNESS	15
DOUBLE END BAG	7
DMM REVOLVER	11
ESCAPE 8 PERSONAL DESCENDER	12
GATOR ALUMINUM CARABINER	11
GECKO ALUMINUM CARABINER	11
LEG ROPE BAG	7
LIGHTWEIGHT TAC RAPPEL HARNESS	14
MINI TRAXION	10
PERSONAL RETENTION LANYARDS	5
PINNACLE DYNAMIC SINGLE ROPE	15
PIRATE CARABINER	11
QUICK ATTACH UNIFORM BELT	15
RAPPEL DUFFLE	7
RESCUETECH ACCESS LIFELINE	2
RESCUETECH HEAVY DUTY RAPPEL/FAST ROPE GLOVE	16
RESCUETECH PRUSIK CORDS	3
RESCUETECH RESCUE 8 DESCENDER	15
RESCUETECH STEEL RESCUE 8 DESCENDER	12
RESCUETECH SURVIVAL BELT 2	15
RESCUETECH TACTICAL PULLEYS	10
RESCUETECH UNIFORM EMERGENCY BELT	15
RIGGING/RESCUE SLING	5
RINGERS TECHNICAL ROPE RESCUE GLOVE	16
ROCK EXOTICA MINI8	12
ROCK EXOTICA MICRO8	12
ROPE BAGS	7
SINGLE MICRO TACTICAL PULLEY	10
STORM PRO RESCUE HELMET	16
TAC 2 RAPPEL-PADDED HARNESS	14
TAC RESCUE FULL-BODY HARNESS	14

All products are available for order at WWW.TACTICALTECH1.COM





WWW.TACTICALTECH1.COM

251 BEULAH CHURCH ROAD
CARROLLTON, GEORGIA

800.334.3368
770.832.9694
Fax 770.832.1676
info@TacticalTECH1.com